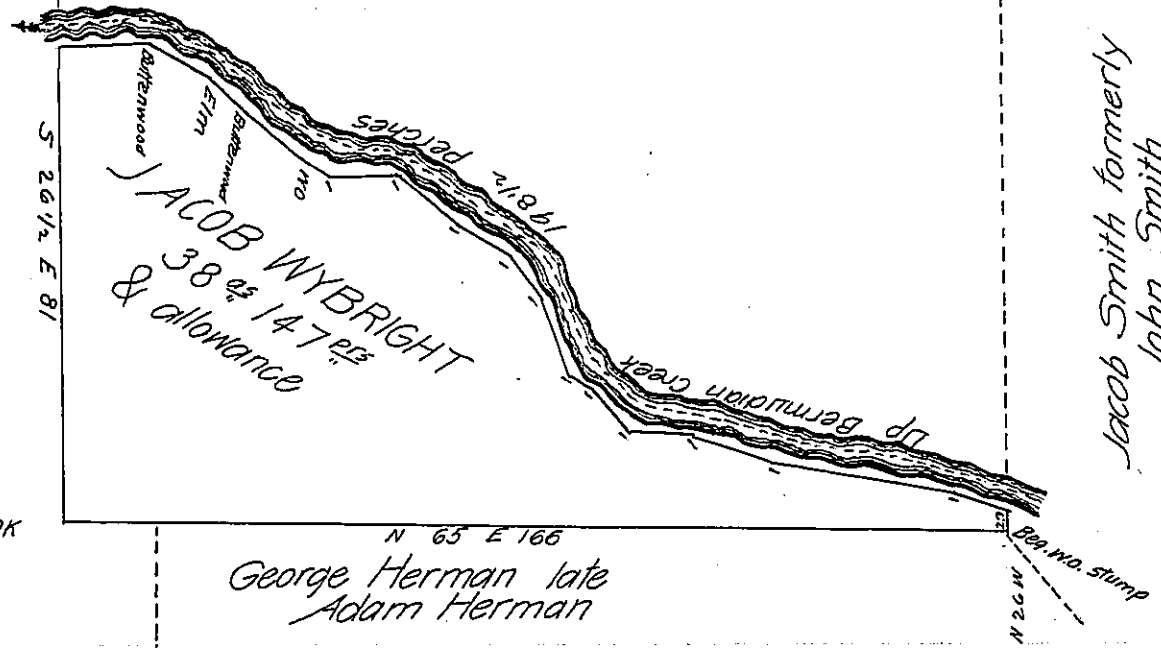


FORM No. 1.

Joseph Bower late
James Hammel



Courses & Distances up Bermudian Creek

- S 86 W 8.6 post
- S 76 1/4 W 8.7 post
- S 74 W 24.7 post
- S 78 W 14.7 post
- S 75 1/2 W 11 post
- N 70 W 10 post
- N 87 1/2 W 4.4 post
- N 46 W 16 post
- N 63 1/4 W 8.3 post
- N 84 W 11.2 post
- N 79 1/2 W 12.5 post
- S 63 W 12.2 post
- N 83 3/4 W 4.4 WOK
- N 75 1/4 W 1.5 Butterwood
- N 61 W 8.3 Elm
- S 84 W 11.5 Butterwood
- S 62 1/4 W 17 post

Situate in Washington Township York County Containing thirty Eight acres. One hundred and forty seven perches & Allowance part of 209 acs 12 acs & Allowance Originally Surveyed in pursuance of a Warrant granted to Jacob Wybright dated 19th October 1738 Resurveyed by George Stevenson then DS on the 2nd June 1762 for George Minehart in pursuance of a Warrant of Resurvey dated 30th May 1761. The above part Resurveyed & divided the 31st day of July 1822 for George Herman and Joseph Bower, owners of said part.

Jacob Kirk J^r D.S.

To Samuel Cochran Esq. S.G.

IN TESTIMONY that the above is a copy of the original remaining on file in the Department of Internal Affairs of Pennsylvania, made conformably to an Act of Assembly approved the 16th day of February, 1833, I have hereunto set my Hand and caused the Seal of said Department to be affixed at Harrisburg, this ninth day of February 1906

Spencer Brown
Secretary of Internal Affairs.